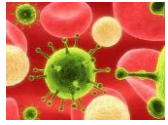
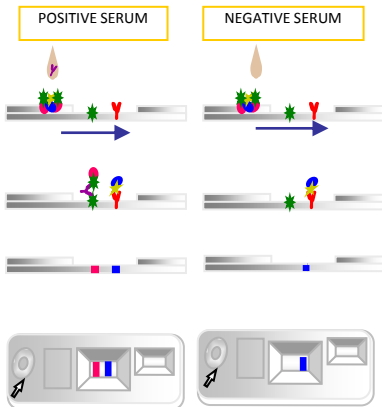


INgezim AIE CROM

R.14.AIE.K41



INgezim AIE CROM is based on a direct Immunochromatography technique, which uses the Rp26 protein of the Equine Infectious Anemia Virus to detect specific antibodies against such virus.



TECHNICAL BASIS

The device consists of a plastic casing with two windows:

- Window for sample addition: Contains the Rp26 and a control protein, bound to coloured latex.
- Window for reading of results: Contains a test line (T) made of Rp26 and a control line (C) made of an antibody specific to the control protein.

Once the sample added, if it contains antibodies, they will bind to the Rp26 conjugated with latex and will flow along the membrane. The antigen-antibody-latex complex will bind to the antigen placed on zone test (T) showing a pink line. The blue line at the control zone indicates the validation of the assay.

APPLICATION

Detection of specific antibodies to EIAV Rp26 in equine samples

SENSITIVITY AND SPECIFICITY

420 equine sera were analyzed with INgezim AIE-CROM in order to evaluate the assay: 21 sera from Argentine classified as positive or negative by other techniques and 399 equine sera from EIA free zones (Mallorca, Spain).

The results obtained indicated a sensitivity and specificity higher than 99%.

COMPOSITION OF THE KIT

- Chromatographic devices
- Vials with diluent



PRODUCT MANUFACTURED BY INGENASA
REGISTRATION NUMBER 2757 RD



SHELF LIFE: **24 months**
Stored at 4°C-25°C

Ed.250117