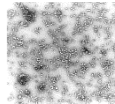
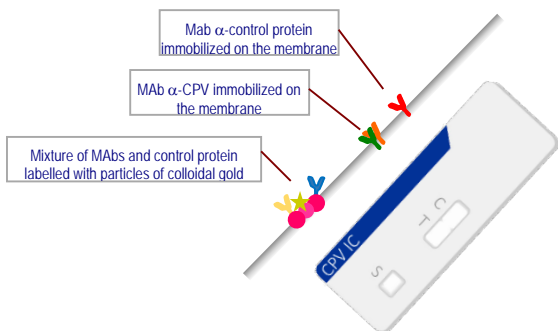


## INgezim® PARVO IC

R.15.CP2.K42



**INgezim® PARVO IC** is a direct immunochromatographic assay, based on Lateral Flow technique, which uses 2 monoclonal antibodies (MAbs) specific to two different epitopes of Canine Parvovirus (CPV).



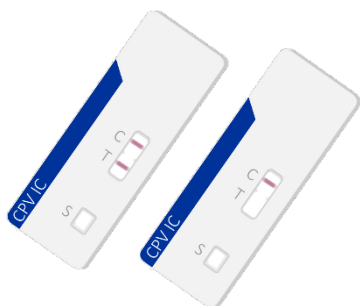
### TECHNICAL BASIS OF THE KIT

The device consists on a plastic casing with 2 windows:

- **Window for sample addition:** Contains a MAb specific of CPV and a Control Protein. All of them labelled with colloidal gold.
- **Window for results interpretation:** Contains a test line (T) with a CPV specific MAb and a control line (C) with a MAb specific to the control protein.

### APPLICATION

Detection of Canine Parvovirus types 2, 2a, 2b and 2c in biological samples (faeces) of dogs.



### INTERPRETATION OF THE RESULTS

**Positive sample:** Pink line in the Test zone and a pink line in the Control zone.

**Negative sample:** Only a pink line in the Control zone.

**Not valid assay:** No pink line in the Control zone

### SENSITIVITY AND SPECIFICITY

**Correspondence with inhibition hemoagglutination test (IHA).**

201 samples of dogs collected from the clinicians in Italy. Samples consisted on two different matrixes: serum for IHA and faeces for IC test. The assay showed 99.2% and 100% sensitivity and specificity respectively regarding IHA.

		IHA		
		POS	NEG	TOT
PARVO IC	POS	120	0	120
	NEG	1	80	81
	TOT	121	80	201

### COMPOSITION OF THE KIT

- Diagnostic devices individually wrapped
- Dropper vial with dilution buffer.



PRODUCT MANUFACTURED BY  
AGROLABO AND DISTRIBUTED BY  
INGENASA



**SHELF LIFE: 18 months**  
Stored: 4°C-25°C

Ed.090418